



Peakto Quick Start Guide

Version 1.8.x

Table of Content

1.Quick start	4
1.1.Peakto's interface	4
1.2.How to start with Peakto?	4
1.2.1.Launching Peakto for the first time	5
1.3.Adding images to Peakto	5
1.3.1.Adding folders	5
1.3.2.Adding catalogs	6
1.3.3.Validating catatogs	7
1.3.4.Viewing all the sources	8
1.3.5.Understanding the ingestion process	9
1.3.1.The Peakto catalog	9
1.4.Understanding Instants	11
1.4.1.Identifying images with multiple versions	12
1.4.2.Viewing instants	12
2. Common Peakto Tasks	14
2.1.Exploring using the grid	14
2.1.1.Anatomy of a grid cell	15
2.2.Annotating your images	16
2.2.1.Annotations and XMP sidecars	17
2.2.2.Annotations and exporting	18
2.3.Working with filters	19
2.3.1.The Filter Bar	20
2.3.2.The Middle Panel	20
2.3.3.Saving filters	21
2.4.Working with albums	21
2.4.1.Explicit Albums	21
2.4.2.Smart Albums	21
2.4.3.Organising albums into folders	22
2.4.4.Albums export	22
2.5.Search through all your photos	22
2.5.1. Conversational photo search	23
• <i>Step 1: Starting a Conversational Search</i>	23
• <i>Step 2: Peakto's Intelligent Analysis</i>	23

• <i>Step 3: Refining the Search</i>	23
• <i>Step 4: Navigating the Search Results</i>	24
• <i>Step 5: Adding Faces and Locations</i>	24
2.5.2. Similarity-based image search	25
• <i>Step 1: Select a Base Image</i>	25
• <i>Step 2: Initiating the Search</i>	25
• <i>Step 3: Analysis and Matching</i>	26
• <i>Step 4: Search Results</i>	26
2.5.3. Search by similar features:	26
• <i>Step 1: Choosing a Base Image</i>	27
• <i>Step 2: Utilizing the New Filter Panel</i>	27
• <i>Step 3: Exploring Similar Images</i>	27
• <i>Step 4: Create Filters with your mouse</i>	27
• <i>Step 5: See the results instantly</i>	27
2.5.4. Centralized search thanks to filters	27
2.6. View your images on a map	29
2.7. Categorize your photos automatically thanks to AI	29
2.8. Access to your editing application	30
2.9. Gather all your modification of a same shot	30
3. Editing Workspaces	31
3.1. The Pixelmator Pro editing workspace	31
3.1.1. Editing any images in Pixelmator Pro	32
3.2. The DXO PhotoLab editing workspace	32
3.2.1. Referencing DXO versions outside watched folders	34
3.3. The DXO PureRAW editing workspace	35

1. Quick start

This quick presentation will give you an overview of all the features of Peakto, without going into the details of each, so you can quickly start enjoying your photos.

Peakto is a meta-cataloger that gathers in a single interface all of a photographer's photos, thanks to its compatibility with many photo editing software (Apple Photos, Lightroom Classic, Luminar AI/Neo, Capture One, Pixelmator Pro, DXO PhotoLab et Pure RAW, Instagram, Aperture, iView Media), with folders and photo files, and with Instagram accounts.

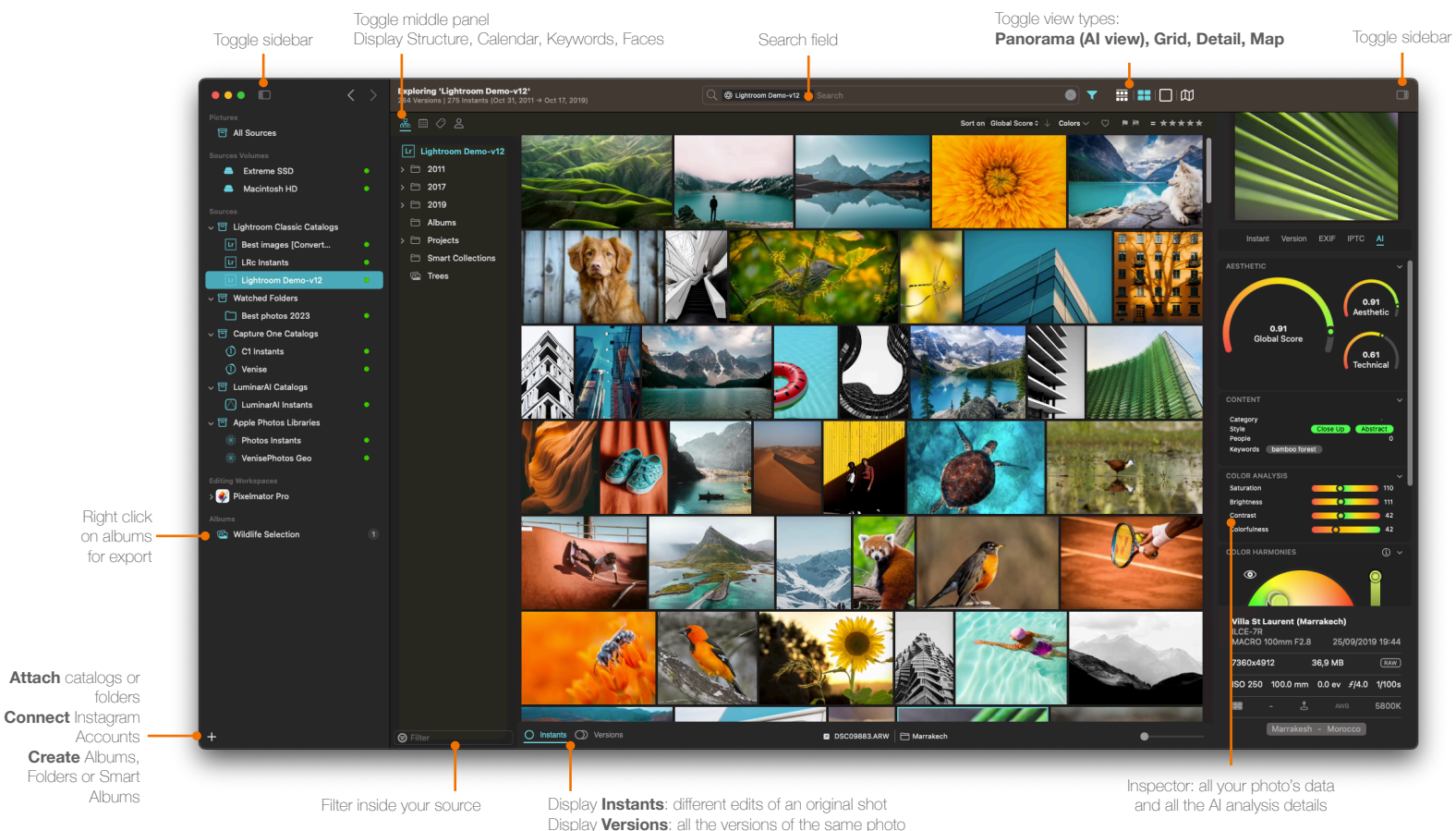
Peakto is designed to be the control tower that gives back the big picture to photographers on their photos and provides tools to manage, analyse, automatically sort and create albums across app boundaries.

1.1. Peakto's interface

1.2. How to start with Peakto?

Peakto is the digital hub for all your images.

It was designed to become the place where you access all your photo catalogs, image collections. It supports the following cataloging apps (Apple Photos, Lightroom Classic, Luminar 4, Luminar AI, Aperture, Capture One, iViewMedia, Instagram and some more).



Peakto will let you :

- i. Explore your photos in one interface
- ii. Search through all your photos
- iii. Categorize your photos automatically thanks to AI
- iv. Annotate and manage your photos
- v. Edit your photos and regroup the different versions
- vi. Create multi-source albums and export them

To start using Peakto, link your photos to it by following the recommendations on how to add photo sources in the next sections.

1.2.1.Launching Peakto for the first time

When you launch Peakto for the first time, you will be greeted by some Welcome screen that highlights the key functionalities of the software. You can always go back to that screen using the *Help → Welcome...* menu from the **Help** Menu.

Peakto will also detect what are the apps that you have installed on your Mac and will propose to activate some specific integrations. You can bypass this step and configure these integrations later from the Settings dialog. If you are ready to configure these integrations, simply follow the on screen instructions. This is discussed in more details in next section.

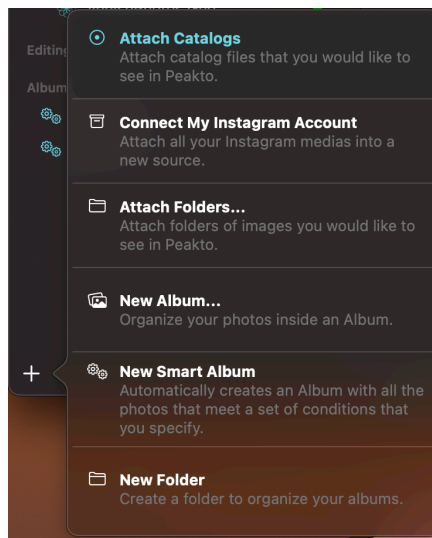
1.3.Adding images to Peakto

You can add 2 types of content to Peakto:

1. Files inside folders
2. Catalogs of one of the supported types (Aperture, Lightroom, CaptureOne Pro, iView Media, all flavours of Luminar)

1.3.1.Adding folders

Simply drag any folder from the Finder to the Peakto user interface or alternatively, choose *File → Attach Folders...* from the **File** Menu. You can also use the global “+” button at the bottom of the interface to reveal the Add menu and choose “*Attach Folders...*”.



The global “Add” dialog.

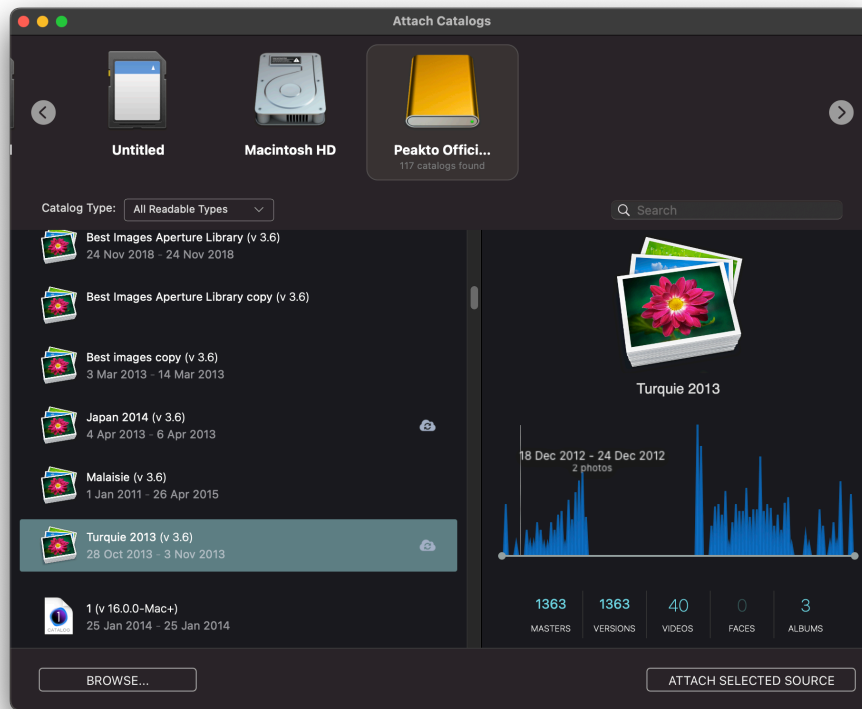
1.3.2. Adding catalogs

If you know the location of your catalogs, you can simply drag the catalog file into the Peakto user interface. It works for :

- Apple Photos libraries
- Lightroom *.lrcat* catalog files
- Capture One Pro *.cocatalog* catalog files
- Capture One Pro *.cosessiondb* session files
- Luminar catalog files
- iView Media Pro *.ivc* catalog files
- Etc...



Alternatively you can choose *File → Attach Catalogs...* from the **File** Menu or use the global “+” button at the bottom of the interface to reveal the Add menu and choose “*Attach Catalogs...*” item. Both actions will reveal the catalog browser that will scan all your attached drives for catalogs.



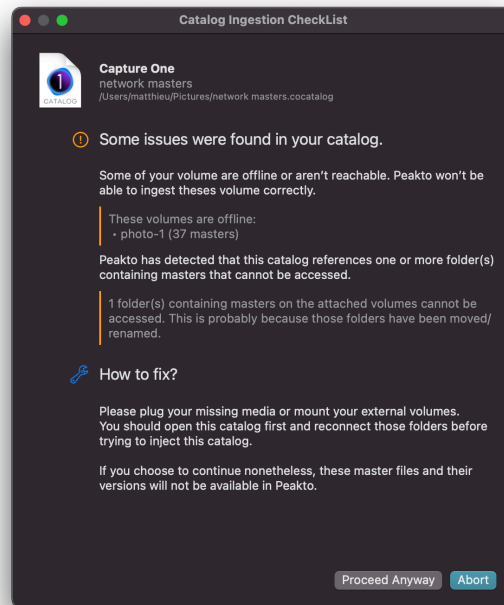
The catalog browser

From the **Catalog Browser** you can select any detected catalog from the list on the left and attach it to Peakto

1.3.3. Validating catatogs

Before attaching a catalog, Peakto will perform some tests on the content to detect possible issues such as missing image volumes, catalog version incompatibilities. All issues are displayed in the Preflight dialog. You should take a moment to read about the detected issues and decide whether it is OK to proceed or whether you should perform some actions

before. Peakto tries to suggest some possible actions.



The preflight dialog

1.3.4. Viewing all the sources

Once ingested, all sources appear in the sidebar and are grouped by type.

Next to the source name, Peakto will display some status icons (see below) indicating:

- if the source is online / offline
- If the source requires synchronisation
- If the source is open

Many commands can be accessed from the source's contextual menu



The sources in the sidebar (left). The contextual menu (right) that gives access to many possible actions on the source.

1.3.5. Understanding the ingestion process

When a source of images (folders or catalogs) is ingested in Peakto the following happens behind the scenes:

- the source is fully read and the **metadata** of all images is retrieved. This includes metadata that is embedded in the image files, or metadata present in sidecars (XMP,...)
- The source **organisational structure is fully read**. This includes folder hierarchy for folders, and full catalog structure (albums¹, folders, projects, ...) for catalogs.
- Some **thumbnails** are constructed for each version present in the catalogs or folders.
- The instants (see later) are resolved.

Once these tasks are finished, the source can be viewed, searched, filtered, etc...

However, another long running task is spawned that will analyse all images and run some AI-based detections in order to build all keywords, scores used by Panorama. This long running task can be cancelled and resumed at any point later on.

1.3.1. The Peakto catalog

Peakto builds its own catalog with the ingested data. The design principles behind the Peakto catalog are the following:

- **We do not create copies of the master images:** when reading a catalog we do not copy any of the images.

¹ Smart albums are ignored as Peakto is not able to recreate the rules that were used in the original catalog, due to the varying capabilities of those apps.

- **We minimise the amount of disk space used:** the thumbnails that we create are small and we rely on the ability to access higher resolution previews inside the underlying catalogs or folders *on demand*.
- **We allow working with offline data:** you can index catalogs or folders that are on external drives and disconnect those drives. Peakto will let you annotate, organize, search,... even if the content is offline.
- We try to **create previews of the images that most accurately reflect the aspect of the image in the source catalog**. If you ingest a Luminar catalog with heavy edits on all the images, we will try to access the previews that Luminar has generated in order to display the versions in Peakto. When such previews are not available we indicate it.

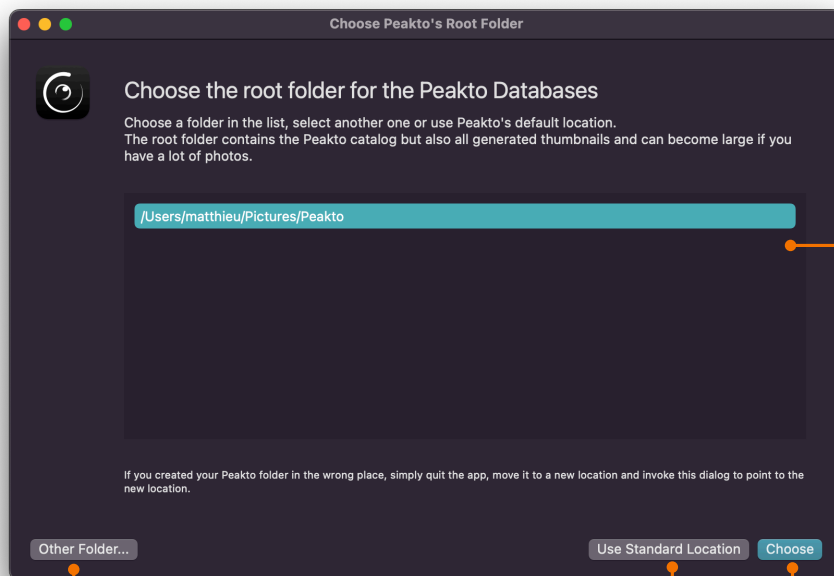
The location of the Peakto catalog is by default the *Peakto folder* inside your *Pictures* folder.

This folder can be moved to another location and Peakto will ask you to point to the new location upon restart.

You can also have multiple catalogs in multiple locations if you prefer to work this way.

Peakto mimics the behaviour of the **Apple Photos** app when it comes to switching catalogs:

- you can use the *Option* key pressed when launching Peakto to display a dedicated dialog allowing you to choose a catalog location or pick an existing location



List of all the known places where a Peakto catalog has been created previously

Specify a new location for a new Peakto catalog

Use the standard location

Choose the location selected in the list

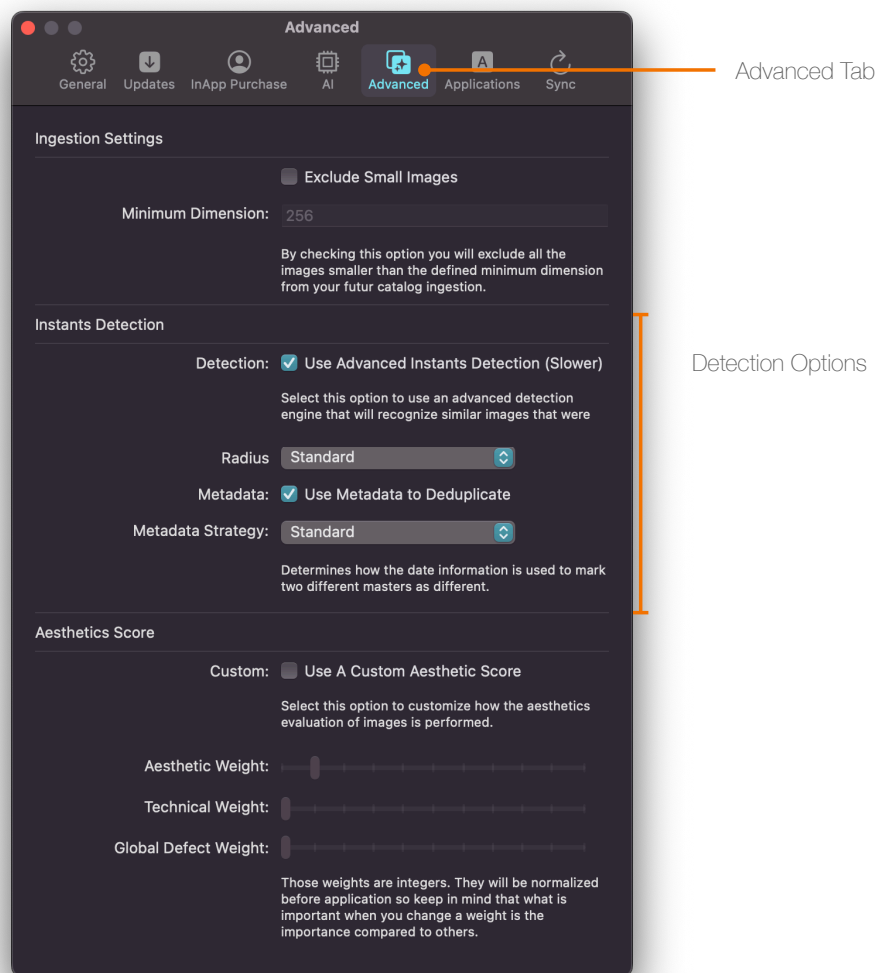
- You can access the current location in the preferences screen and change it from there.

1.4. Understanding Instants

Many non-destructive photo editing apps² can manage multiple *versions* of an original shot. The idea is to let the user explore many types of adjustments on the same image and create as many variations that are needed. These variations are called *virtual copies* in Lightroom or DXO PhotoLabs, *variants* in Capture One Pro, etc..

Peakto pushes that concept a bit further: indeed, because Peakto can handle multiple underlying sources, it can happen that the same original image (master) has been edited in various apps, causing multiple versions to exist in different catalogs. In order to bring all these versions together under one roof, Peakto uses the concept of **Instant**. The Instant will group all versions across app boundaries. This grouping is based on image similarity as well as some metadata considerations.

The control over the building of instants is accessible in the preferences.



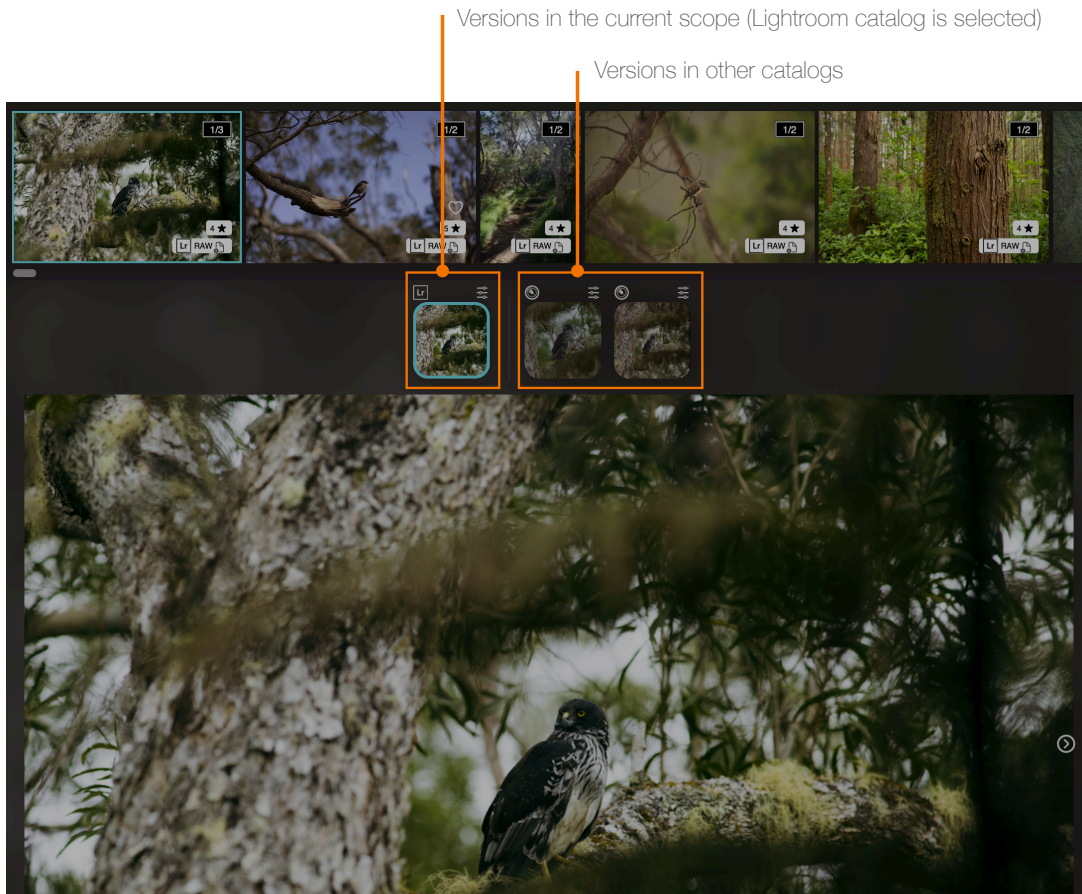
² Some apps like Luminar or Apple Photos do not support that concept yet.

1.4.1. Identifying images with multiple versions

Every thumbnail in the grid view can display the number of versions in the underlying instant (see [Anatomy of a grid cell](#)). When a number is displayed it means that there is more than one version and you can go to the detail view to view the Instant.

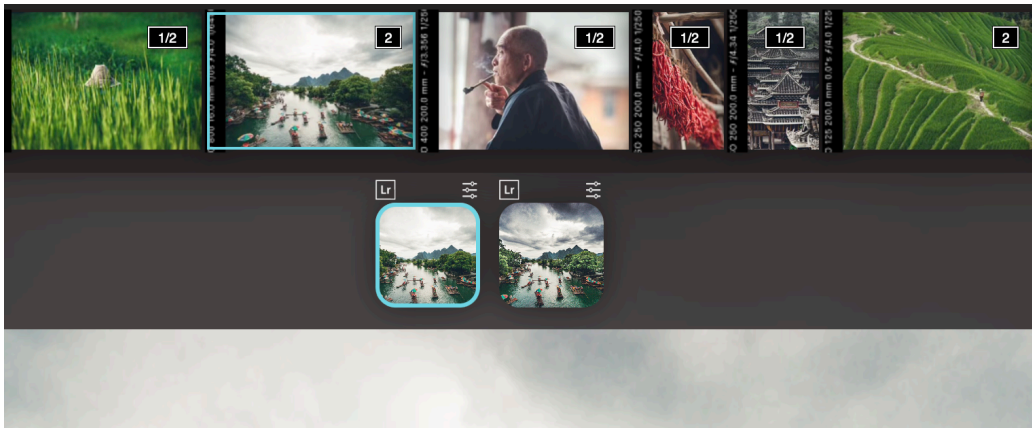
1.4.2. Viewing instants

When opening the detail view for a version that belongs to an Instant, Peakto will display all the versions present in that Instant on a left and right of a separator. Each thumbnail is tagged with the source catalog.

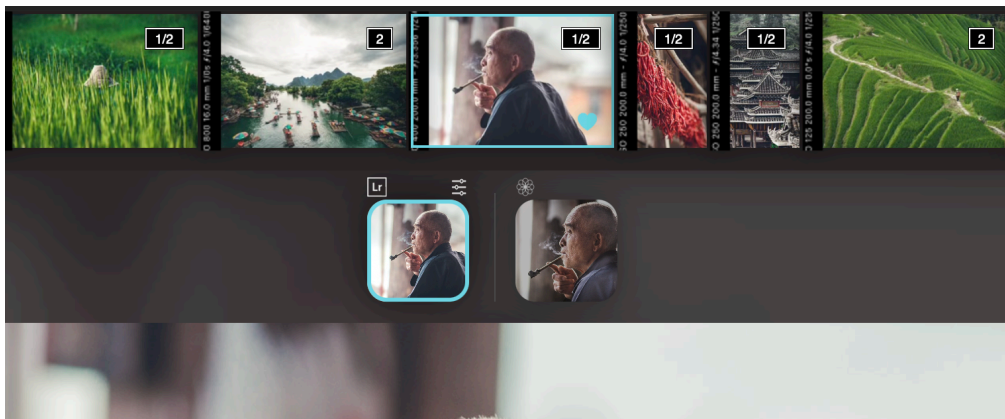


Several situations can occur.

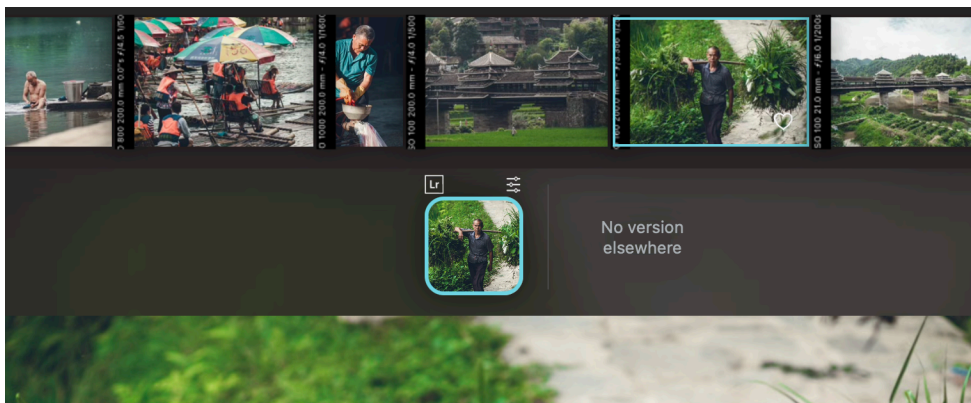
If versions are in the current selection, they are displayed to the left of the separator, like in the example below where all versions are virtual copies in the same Lightroom catalog.



If versions are in sources distinct from the current one, they are displayed on each side of the separator, like in the example below where the versions are either in Lightroom or in Apple Photos.



If no versions are available outside from the currently displayed version, the following is displayed.

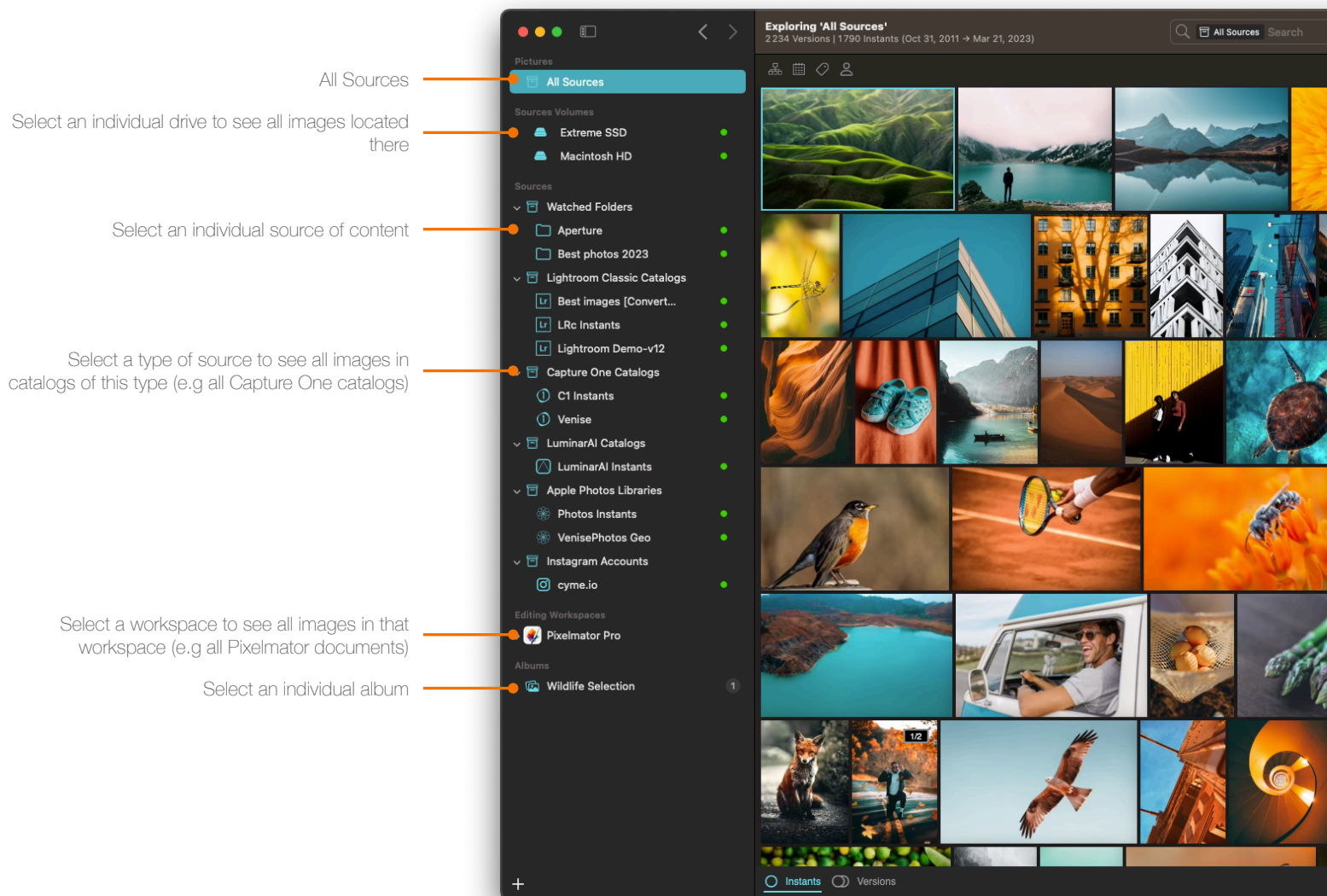


2. Common Peakto Tasks

2.1. Exploring using the grid

The **grid** view is probably the most familiar view available in Peakto to view your images. It works hand in hand with the **sidebar**: the sidebar selection drives what is shown in the grid. You can select :

- a specific source
- a specific type of source (e.g all the Capture One catalogs)
- multiple sources at once, using the Command (⌘) key to create multiple selections
- all sources using the **All Sources** item at the top of the sidebar
- a specific Editing Workspace (e.g Pixelmator Pro) to see all images in that workspace
- a specific album

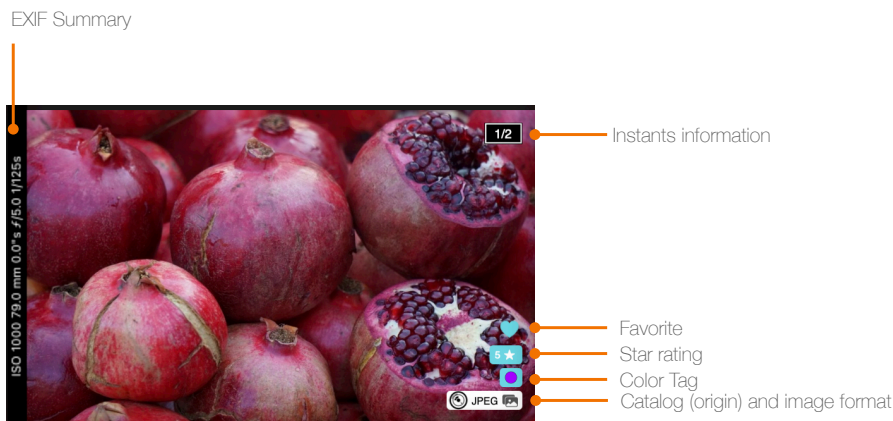


The grid lets you switch between the **Instants** and the **Versions** view:

- in **Instants** view, all the versions of an instant are collapsed and a single version (called the poster) is displayed in the Grid.
- In **Versions** view, all versions are displayed next to each other.

2.1.1. Anatomy of a grid cell

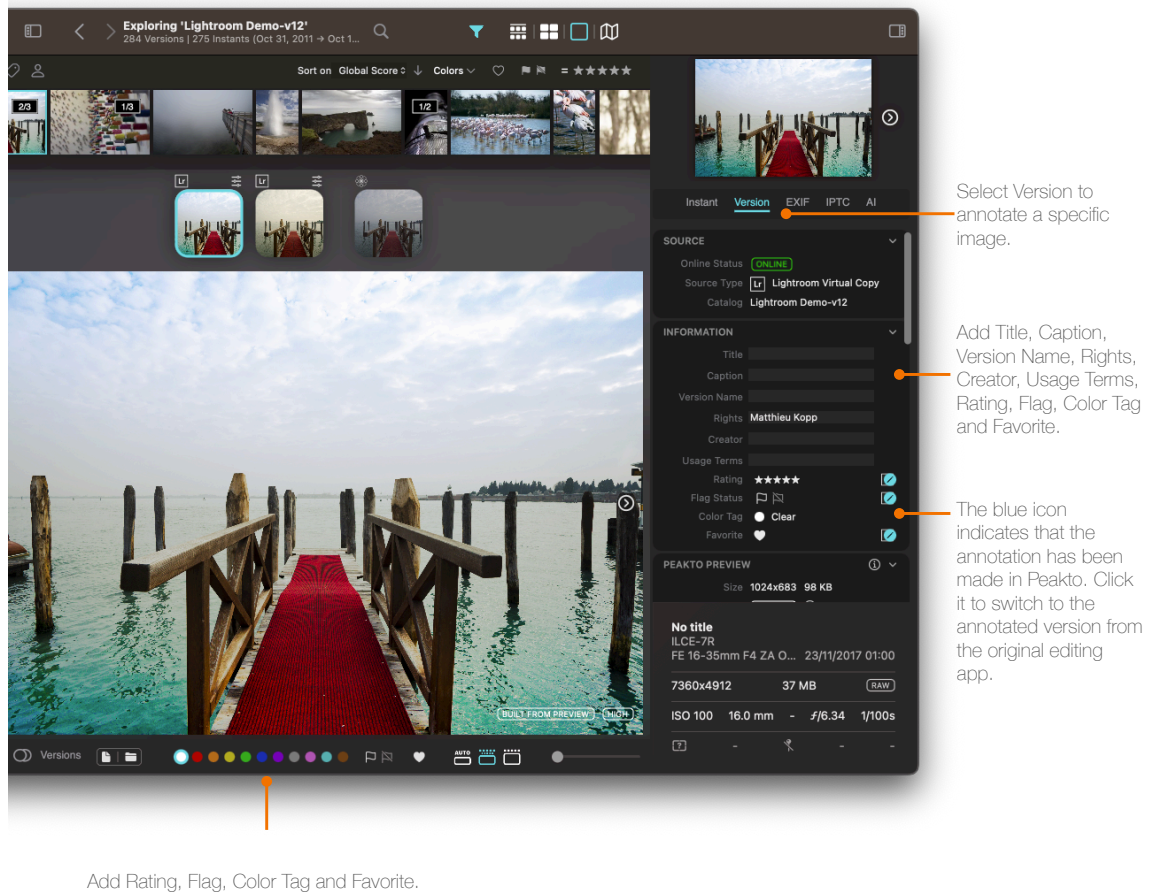
In addition to displaying an image, each cell of the grid can display additional information using overlays.



Grid cell

The Instants Information badge is displayed when there are more than 1 version in an instant. The badge takes the form nn/mm where nn is the number of version in the currently selected scope, while mm is the total number of versions found by Peakto. In the example above, 1/2 means that there is 1 version in the current scope out of a total of 2.

The type of information displayed is controlled using the *View* → *Grid View Options item* from the **View** Menu or using the *View Options* contextual menu accessible via Control+Click in the grid.



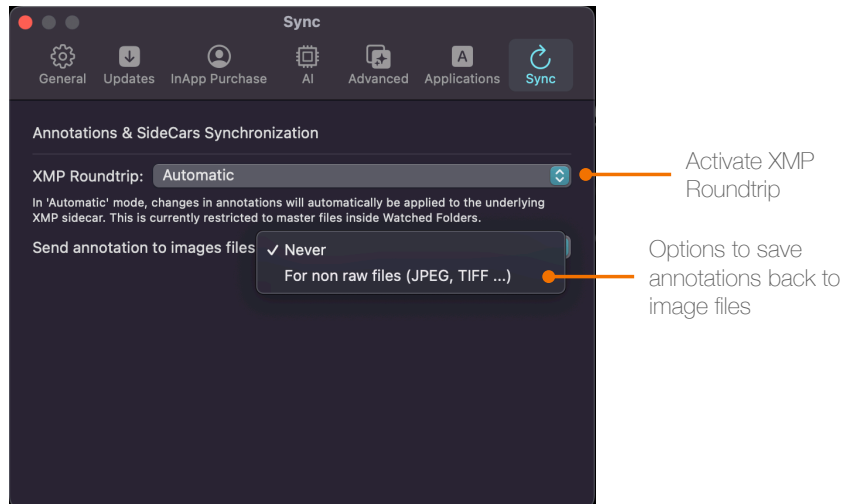
That information appears once a photo is selected:

- in the inspector,
- in the Detail view, at the bottom of each image,
- in the Grid view, by clicking on the Edit icon.

The inspector gives additional information about the origin of the annotations. A blue icon indicates that the annotation has been made in Peakto. Click on it to reveal the annotated version from the original editing app.

2.2.1. Annotations and XMP sidecars

Peakto can leverage XMP sidecars to exchange annotations with other tools that support XMP (Adobe Bridge, DXO Photolab,...). This is currently restricted to sources that are "Watched Folders". In order to activate this option, open the **Peakto Preferences** panel and select the **Sync** tab

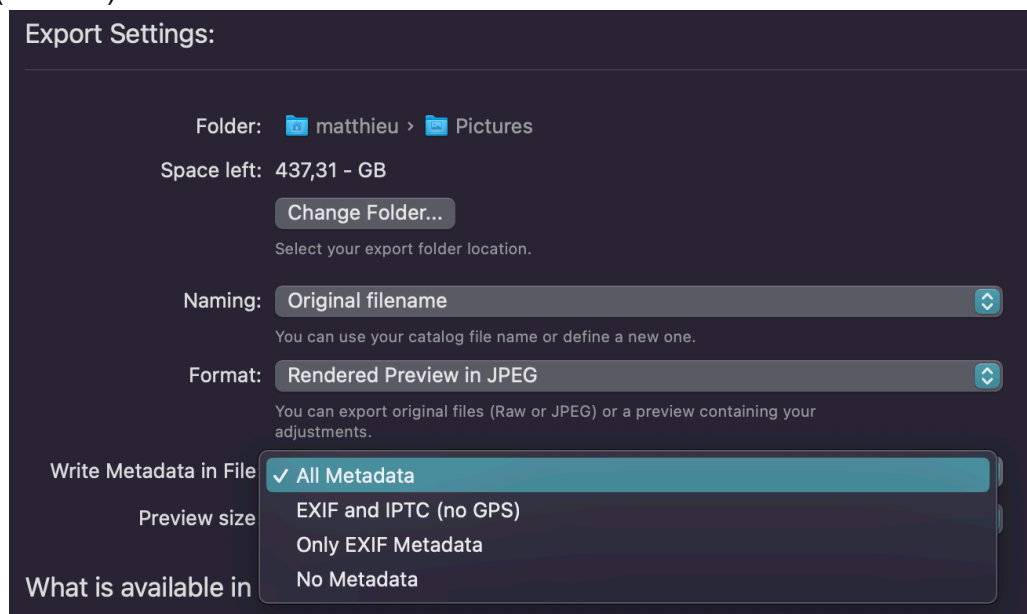


To activate the XMP roundtrip for Watched Folders, simply select “Automatic” for the XML Roundtrip option. When selected, it means that a sidecar XMP will be created or updated every time the corresponding master version is updated. In the case of JPEG files, an additional options lets you control whether the annotations should be written into the files. This is useful as some tools don’t rely on XMP sidecars for non-RAW files but read the metadata from the images themselves.

Activating the roundtrip via XMP lets you use Peakto to add annotations to files and see those annotations propagated to other tools that leverage XMP data.

2.2.2. Annotations and exporting

When exporting annotated versions from Peakto, the annotated values can be added to the exported images through an option available in the export panel. Choose the appropriate option from the **Write Metadata in File** dropdown menu. The **All Metadata** and Exif and IPTC (no GPS) both write custom annotations back to the file.



2.3. Working with filters

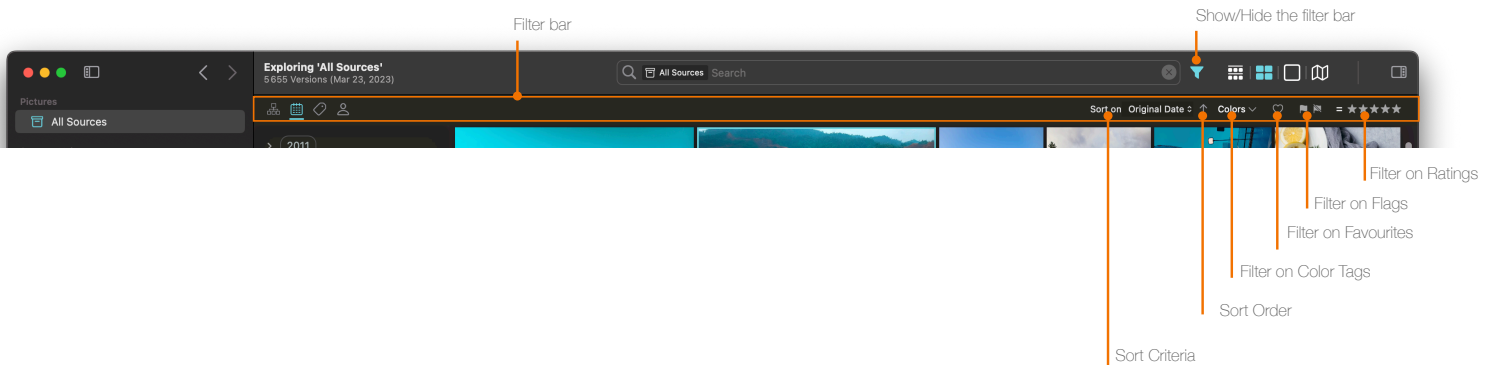
Filters are a great way to find images by restricting the scope via some criteria.

Peakto supports 2 ways of filtering in the user interface:

- via the **Filter Bar** underneath the toolbar. This bar can be shown or hidden using the Filter icon next to the search field.
- Via the **Middle Panel** to create powerful filters based on dates, keywords, faces and structure

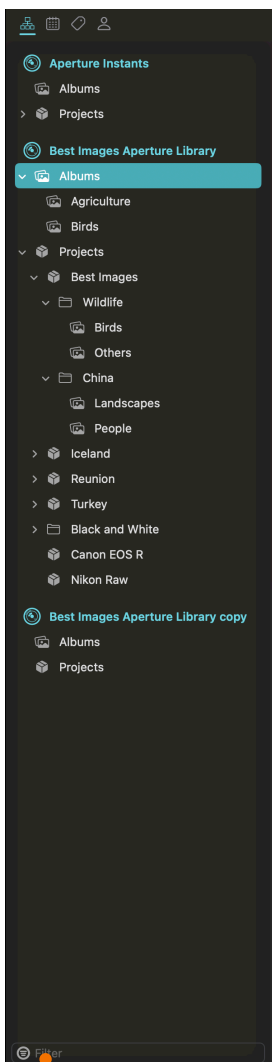
2.3.1. The Filter Bar

The Filter bar gives you access to the most common filters and lets you sort the view based on a variety of image properties

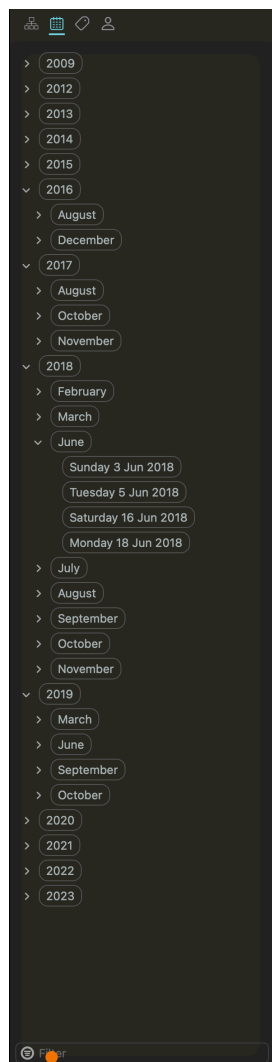


2.3.2. The Middle Panel

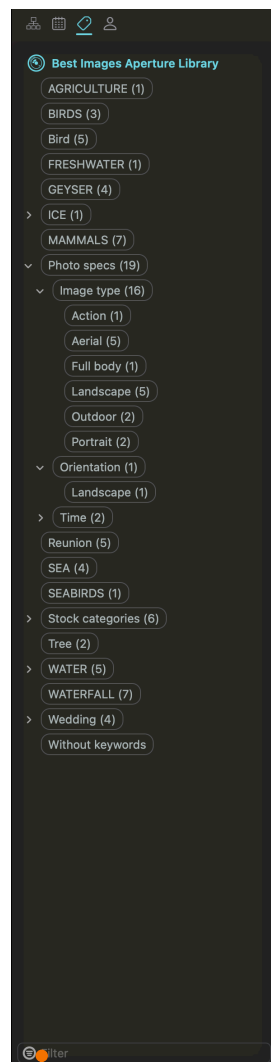
The Middle Panel contains a variety of filter criteria and is shown/hidden by clicking on one of the 4 categories, which are:



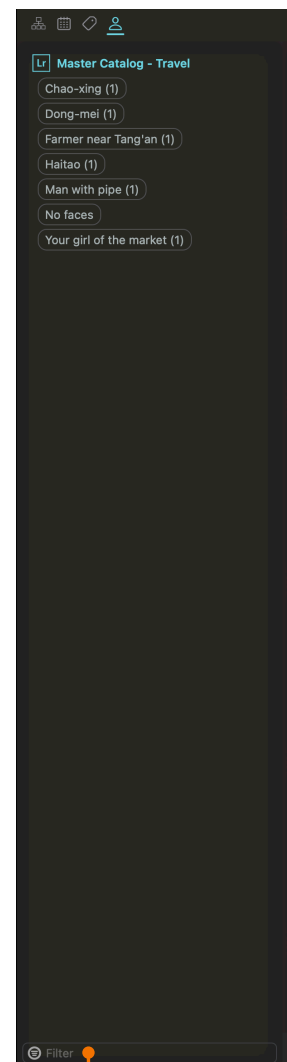
Filter the list by name






Filter the list by month/year



Filter the list by keyword



Filter the list by faces

- **Structure:** this panel contains all the structural elements that are read from the underlying catalogs such as collections, folders, projects. In the case of File System folders, the structure panel shows the subfolders of the top watched folder.
-  **Dates:** all the dates of the images, organised by year / month and day
-  **Keywords:** all the keywords from the underlying catalog, including hierarchical relations
-  **Faces:** all the faces from the underlying catalog

2.3.3. Saving filters

Filters cannot be saved as such, but you can create Smart Albums based on a combination of such filters.

2.4. Working with albums

You can group photos in collections called albums. If you are familiar with apps like Apple Photos / Lightroom / CaptureOne...then albums are going to feel very natural in Peakto.

Albums can be of two flavours:

- **Explicit albums** in which you manually add images via drag and drop
- **Smart albums** that are defined via a set of rules and update their content dynamically

Albums appear at the bottom of the sidebar and are created either from the *File → New Album...* / *File → New Smart Album...* menu actions from the **File** Menu or using the global “Add” button at the bottom of the sidebar.

All albums can contain photos from all kinds of sources.

2.4.1. Explicit Albums

Explicit albums, once created, are populated via drag and drop of content.

2.4.2. Smart Albums

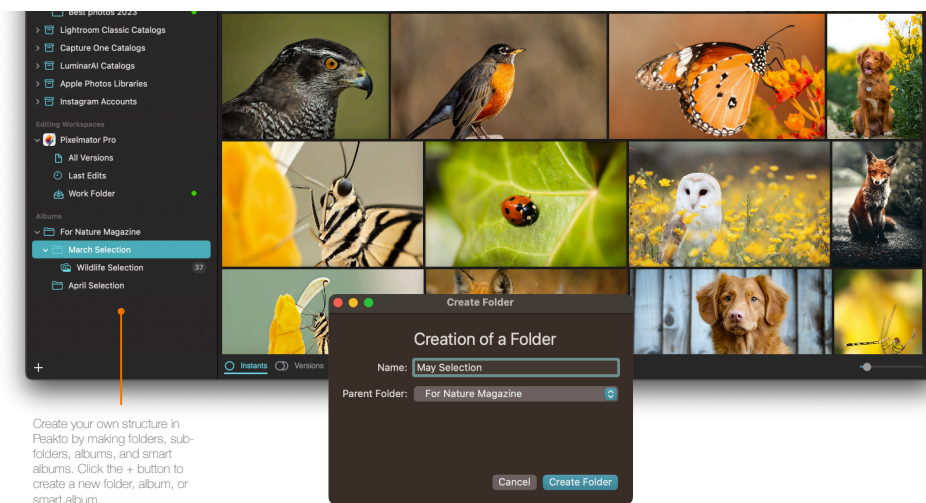
Smart albums are created by combining criteria on a attributes of images that live inside the catalog:

- EXIF metadata
- IPTC metadata and annotations
- Panorama-generated keywords and image categories
- AI generated scores
- File and Path properties

Rules can be arbitrarily complex and mix AND and OR logical operators.

2.4.3. Organising albums into folders

Albums can conveniently be organised into hierarchies using folders.



2.4.4. Albums export

Albums allow you to export batches of images from multiple sources. For example, you can group photos from Apple Photos, Lightroom and a folder in the same album. Without modifying the storage of your photos, Peakto can export all your photos, in the best possible resolution.

Peakto details the resolution of the exported images. You can change the size of the images you want to export. You can export the original files in the original format or export a preview containing your latest adjustments (JPEG, TIFF, PNG). You can export your files with included metadata (except the ones attributed in Peakto).

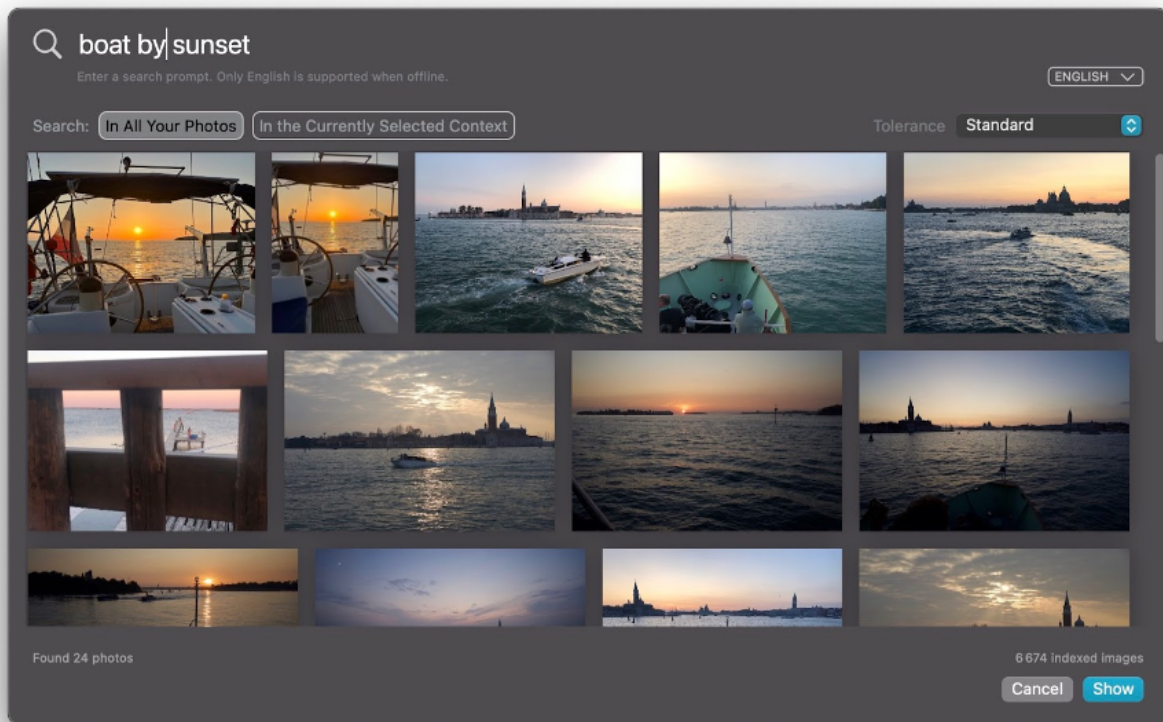
2.5. Search through all your photos

Using artificial intelligence, Peakto revolutionizes how you manage and interact with your digital photos. Offering a centralized search that allows you to easily and quickly browse through all of your photos, regardless of where they are stored. Peakto's AI can analyze each image, understand its content, and classify it accordingly. Whether you have a photo of a sunset, a birthday, or a day at the beach, Peakto can identify and appropriately categorize it.

To push the boundaries even further, Peakto has introduced 3 major functionalities that elevate the photo search experience to a whole new level.

2.5.1. Conversational photo search

Conversational photo search is a groundbreaking feature in the latest version of Peakto, transforming the way you interact with your photo collection. This innovative functionality empowers users to effortlessly find images by typing natural language commands or phrases in any language.



- **Step 1: Starting a Conversational Search**

Click on the Dialogue icon in front of the Search bar to initiate a conversational photo search. Begin by typing a keyword or a descriptive phrase that represents the image you wish to find. For example, you can type "sunset" if you're looking for sunset-themed photos.

- **Step 2: Peakto's Intelligent Analysis**

Peakto leverages advanced language processing capabilities to interpret and analyze your typed text. It comprehends your search query and evaluates your content to identify relevant images that match your request. The system accurately understands your intent and initiates the search process accordingly. It also detects the language used.

- **Step 3: Refining the Search**

Search works best when multiple words are used to describe the intent. Adding additional details or specifications will help narrow down the results further. This enables you to

pinpoint the exact images that best suit your requirements. You can adjust the number of results obtained by choosing a broader or narrower tolerance.

You can write in any language if you're connected to the Internet. If you're offline, you can only search in English.

- **Step 4: Navigating the Search Results**

Once the search results are generated, you can easily navigate through them to locate the specific image you are seeking. With a user-friendly interface, Peakto presents the results in an organized manner, allowing you to browse through the collection seamlessly. The search text you used is logically added as a criteria in the search field.

- **Step 5: Adding Faces and Locations**

Click on the Person and Location icons to search photos with a specific person or location already tagged in your catalogs. For example: "@Lisa eating ice cream in #Barcelona".

To find out more, here are a **few tips** to make the best out of it.

Reminder: how does it work ?

Search works by turning a query text into a specific number called a signature and comparing it against all pre-computed signatures of your images. When they are *close*, then the image is considered to be a candidate for the result of the query. The notion of "*close*" is ambiguous as it depends on the query text, the language, and the image content. It is easy to sort the returned images by distance to this query and show the closest first...but it is hard to find when to stop displaying images.

This explains why sometimes you won't find immediately what you are after

The tolerance

The search panel has a drop down that lets you adjust the level of tolerance between close / standard / tolerant. This simply changes the value of the above mentioned threshold and will display more or less images.

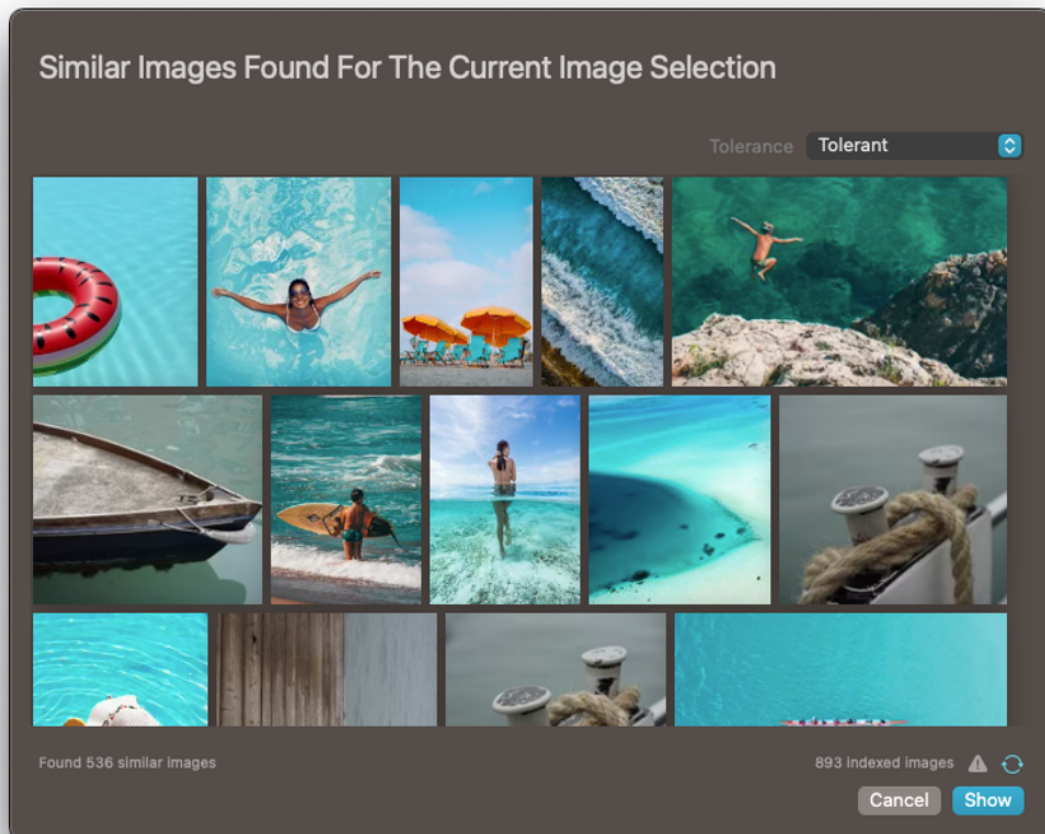
Some tips

- **Use many words:** the more precise the query, the more precise the result
- Don't hesitate to **set a lower threshold** by using the '*Tolerant*' setting even if it means that you'll get more images returned
- Watch for the number of images in the index...if this number is very different from the number of images in your database, it could be that the index is not fully loaded. Consider relaunching Peakto to see if that number changes.
- **Check the detected language:** Peakto understands many languages but will convert the query in English to use its AI model. Make sure that the language shown in the popup is really the language you use to type.

In any case, send us feedback if you encounter issues.

2.5.2. Similarity-based image search

Peakto offers a powerful Similarity-based Image Search feature that allows users to find images with similar content based on a specific image selected as the base. Similarity is considered at many levels in the image: main subject, colors, background, light conditions, etc... Peakto will return the identical or nearly identical images first, and the similar images next



- **Step 1: Select a Base Image**

To begin, choose a specific image from your collection that will serve as the base for the similarity search. This image will act as the reference point for finding other images with similar attributes. You can only select one image.

- **Step 2: Initiating the Search**

Once you have the base image selected, press "Control+Click" to access the dialog window, which provides the option "Find Similar Images...". Select this option, and a dedicated search window will appear, displaying the Similar Images found by Peakto.

You can also conveniently access the similar images from the new filter panel dedicated to similar features.

- **Step 3: Analysis and Matching**

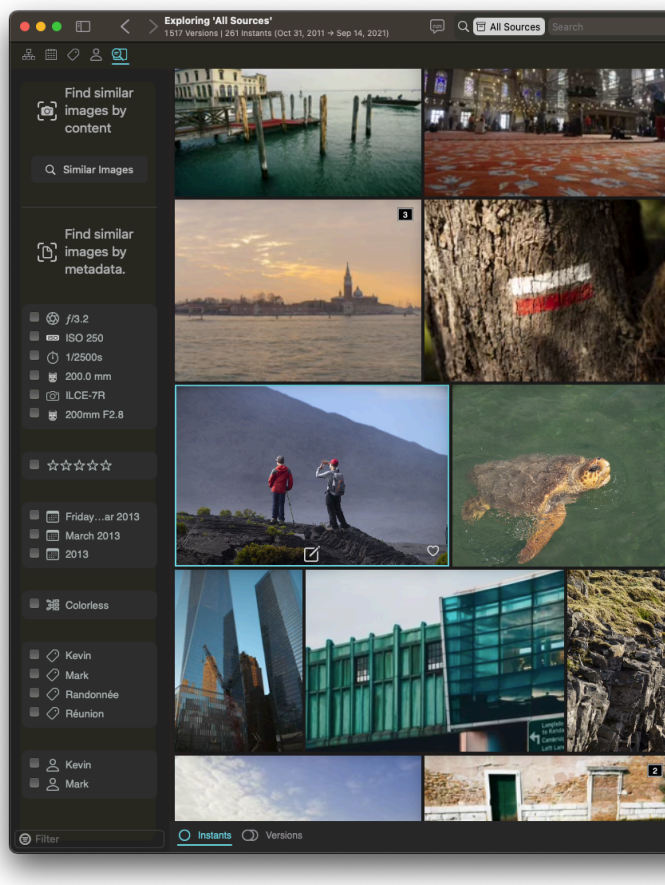
Peakto's advanced algorithms analyze the content of your chosen base image to identify its key characteristics. These characteristics may include color schemes, specific objects or people present, overall composition, or the mood of the photo.

- **Step 4: Search Results**

Peakto intelligently scans through your image collection, seeking those images that share similar traits with your base image. The platform matches the identified characteristics and displays all relevant images. The search results are presented in order of similarity, with the most closely matching images appearing at the top of the list. To control the number of results obtained, you can adjust the tolerance level, selecting a broader or narrower range of similarities.

2.5.3. Search by similar features:

The “Search by similar” feature in Peakto allows you to efficiently identify and group images with similar characteristics from your collection. These features can range from technical aspects like ISO setting or lens type to content-related attributes such as landscape, portrait, or macro photography.



- **Step 1: Choosing a Base Image**

To begin, you need to select a base image from your collection. This image will serve as the reference point for finding other images with similar characteristics.

Note: if you select more than 1 image, Peakto will only list the characteristics that are common to those images.

- **Step 2: Utilizing the New Filter Panel**

Peakto features a filter panel accessible from the top bar, designed specifically for the Search by similarity functionality. Click on the icon to display the panel. You will find a comprehensive list of various characteristics associated with your selected image. These characteristics encompass both technical details, such as ISO setting and lens type, use

annotations (ratings, keywords....) and content-based classifications (from Panorama for example).

- **Step 3: Exploring Similar Images**

Click on any listed characteristic that you are interested in using for comparison. You can select one or more features that you wish other images to share in common with your base image.

- **Step 4: Create Filters with your mouse**

When you click on a characteristic, it automatically gets added to the search field, eliminating the need for manual typing or adjustments. The software handles this process for you, streamlining the search experience.

- **Step 5: See the results instantly**

As filters get added, Peakto will promptly fetch all images that match the selected characteristics, presenting you with a refined collection of relevant images

2.5.4. Centralized search thanks to filters

To search through all your photos, use the any of the views, select all your sources in the left sidebar, then use the search bar in the top-middle and type your queries.

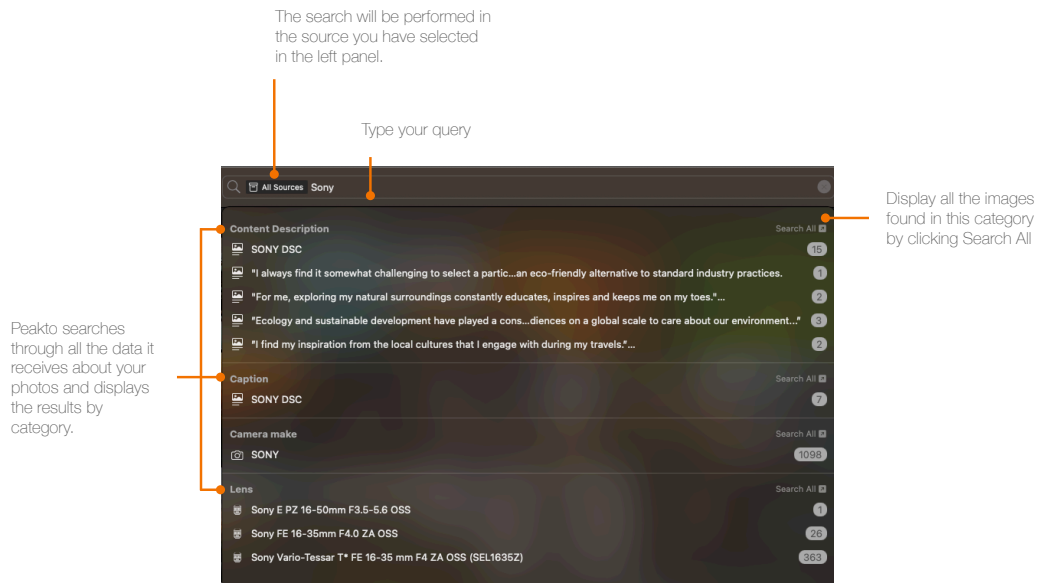
You can restrict your search to specific folders/catalogs/albums by selecting them in the sidebar.

You can search using the metadata associated with your photos by you, by your devices (camera, smartphones), by the software you used to edit your image or automatically attributed by Peakto.

Search by metadata:

- Camera model,
- Camera Lens,

- Software,
- EXIF,
- IPTC.



That information appears in the inspector. You can display some of that information directly in the Grid view using the Grid View Options, in the View menu.

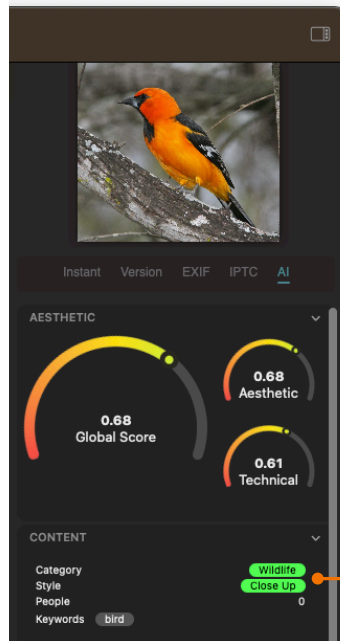
You can also search based on your annotations:

- Flags,
- Color Tags,
- Ratings,
- Favorites.

That information appears once a photo is selected:

- in the inspector,
- in the Detail view, at the bottom of each image,
- in the Grid view, by clicking on the Edit icon.

You can also search based on keywords from the underlying catalogs, or on keywords generated by the AI. Thanks to image recognition, Peakto also annotates your photos automatically with keywords, based on their content and style. You can use the keywords assigned by the AI to find images, for example all your bird pictures by typing "Bird" in the search field.



Content analysis with Categories, Styles, People and Keywords automatically added by Artificial Intelligence appears in the left panel. They can be used to search for an image.

2.6.View your images on a map

When images have GPS information, you can see them displayed on a map. Two types of maps are available:

- In the inspector, a minimap is entered on the coordinates of the currently selected image, if available
- The toolbar gives access to a global map where all images of the current scope are being displayed

2.7.Categorize your photos automatically thanks to AI

Peakto'AI automatically analyzes your images and categorizes them.

Without changing the original structures of your catalogs, Peakto gives you a sorted view of your images in the Panorama View. You can also use the categories assigned by the AI as search queries.

1. By category:
2. Architecture,
3. Astro-photography
4. Wildlife
5. Automotive
6. Events & Wedding
7. Fashion
8. Food & Drinks
9. Nature
10. People
11. Portrait

- 12. Screenshots
- 13. Sport
- 14. Street
- 15. Water & Underwater
- By Styles:
 - Abstract
 - Aerial
 - Close Up
 - Night
- Harmony and Colors
 - Compound
 - Complementary
 - Triad
 - Simple Split
 - Colors: Brown, Chocolate, Goldenrod, Yellowgreen, Medium Aquamarine...
- People
 - Alone
 - In Duo
 - In a Small Group
 - In a Large Group
- Light
 - Bright
 - Dark Images
 - Highly Saturated
 - UnderSaturated
 - High Contrast
 - Low Contrast

2.8. Access to your editing application

Peakto is the central hub for all your photos. You can right click on any images to open it in the editing software you used to modify it.

You can also open it in another editing software directly from Peakto. Once modified, the preview of your photo is updated in Peakto. If you need to force the update you can right click on the source and access to a smart re-ingestion or a new synchronization.

2.9. Gather all your modification of a same shot

You can make several edits on the same photos. But you can feel lost in your photo editing and you have difficulties in finding your original file.

Peakto introduces a new concept in photography: Instants! Not to be mistaken with the different versions of a photograph.

You can make several versions of the same point of view, of the same portrait.... But the moment you press the shutter is unique.

This unique instant...you can then modify it by retouching your photos. Peakto allows you to retrace this history. You can display in the grid each Instant thanks to the button at the bottom left of the main screen.

When you select a photo to display it in the Detail View, Peakto will regroup the different Instants at the top of the photo and display the editing software you used to create them or show if they are just stored in a folder.

3. Editing Workspaces

Peakto has inbuilt support for some third party editing apps and lets you invokes those apps in a controlled manner through the use of an editing workspace

Editing workspaces represent a specific type of interaction with an editing app. They usually consist in :

- a quick access to all the files edited in the application
- A work folder where new files can be added

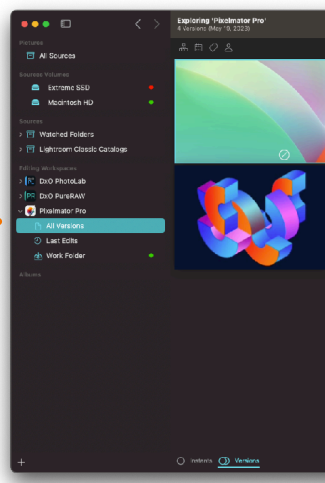
Depending on the app, the type of interaction or capabilities of the workspace are different.

3.1.The Pixelmator Pro editing workspace

Peakto includes a dedicated Workspace for Pixelmator Pro v3 and following.

All Pixelmator Pro files are rendered on the fly, at full resolution, using Pixelmator in the Background.

When adding a new file to the work folder of that workspace, a new Pixelmator Pro document is created from the source image



This workspace has the following properties

- All Pixelmator Pro files are rendered on the fly, at super high resolution preview, using Pixelmator in the background. You have the same experience than in Pixelmator. You can click on the file from Peakto to open it in Pixelmator for editing where you can access to all your layers and edits.
- All Pixelmator Pro files are rendered on-the-fly, providing super high-resolution previews by utilizing Pixelmator in the background. This ensures that you have the same immersive experience as in Pixelmator itself. Should you wish to edit a file, simply click on it within Peakto, and it will open in Pixelmator, granting you access to all your layers and edits.
- The 'Last Edits' section shows the latest document you have edited in Pixelmator, allowing you to easily and quickly return to edit them.
- When adding a new file to the work folder of that workspace, a new Pixelmator Pro document is created from the source image

3.1.1.Editing any images in Pixelmator Pro

From Peakto, you have the ability to select images from various catalogs such as Capture One, Lightroom, and more. Simply drag and drop them into the Pixelmator Pro Work Folder located in the left sidebar. This action will create a Pixelmator Pro document using those files. Clicking on the documents will open them in Pixelmator Pro, granting you access to all the layers and edits. If your original document was a RAW file, it will appear in the RAW layer within the Pixelmator Pro document.

Once you have completed your edits, Peakto will reflect the synchronized image, capturing the changes made. Additionally, Peakto will indicate that your image now has different versions: the original document in Capture One and the new one in Pixelmator Pro. Peakto can serve as a starting point for editing your image in Pixelmator while keeping track of all the changes made.

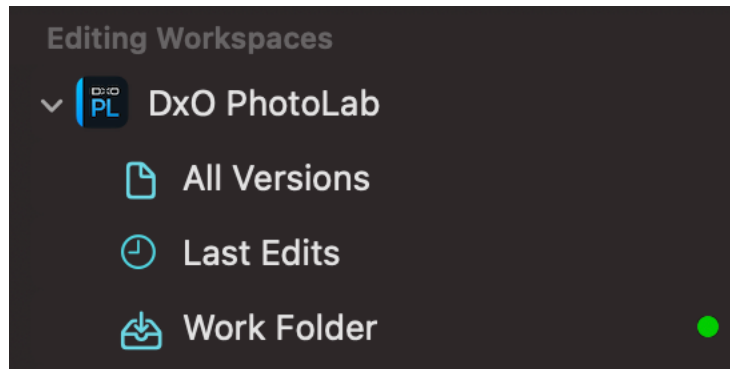
Moreover, you have the option to create a new document directly in Pixelmator. By dragging and dropping an image from Peakto to Pixelmator Pro, you can add it to your new document. You can then save this new document directly into the Peakto Work Folder, where it will appear in Peakto. Additionally, you can annotate your new images in Peakto and access the AI analysis conducted within Peakto, including aesthetic scores, content analysis, and color harmonies.

3.2.The DXO PhotoLab editing workspace

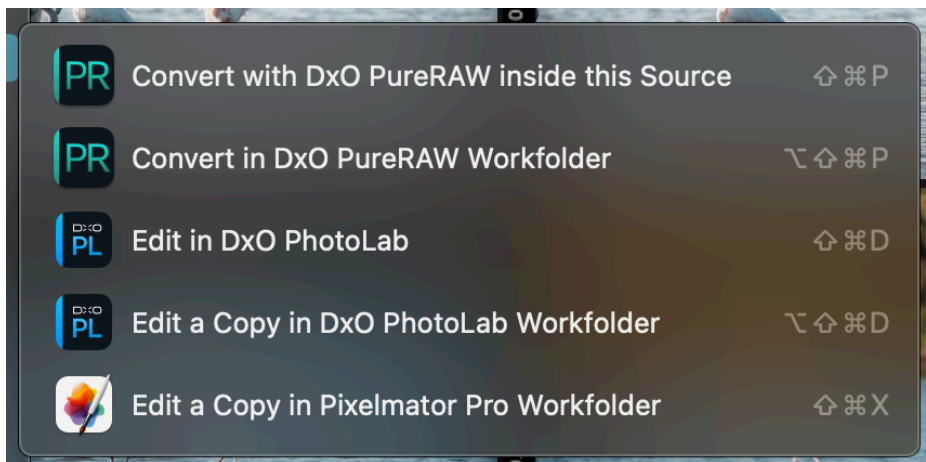
Peakto includes a dedicated Workspace for DXO PhotoLab v5 and v6. PhotoLab edits are stored in dedicated sidecar files called 'dop' files and these files are now detected by Peakto when scanning folders. Changes in those files, or new such files are interpreted as events on the underlying master images. As a result, Peakto will now create a dedicated version for each of those sidecars, and retrieve the DXO generated preview to accurately reflect the aspect of the preview. Peakto will also accurately render virtual copies that are created inside DXO.

The DXO PhotoLab workspace comes with **2 new menu items** when selecting an image in Peakto that allow to invoke PhotoLab directly from Peakto:

- Edit in DXO PhotoLab: will launch PhotoLab on the master image in its original location



- Edit in a Copy in the DXO PhotoLab Work Folder : will launch PhotoLab on a copy of the master file inside the working folder.



Consider the following example:

- let's start from a master image in one watched folder. Peakto renders it normally as a file.



- Invoke Edit in DXO and perform some edits in DXO. The rendered version inside Peakto is now the DXO preview for that file.



- Add a virtual copy in DXO for the same image:

This workspace has the following properties:

- the **All Versions** node references all DXO **dop** files and associated versions, fully rendered
- The **Last Edits** node references the same images as the **All Versions** node sorted by edit date (last edits come first).
- The **Working folder** node contains the DXO versions that are created inside the working folder.

3.2.1. Referencing DXO versions outside watched folders

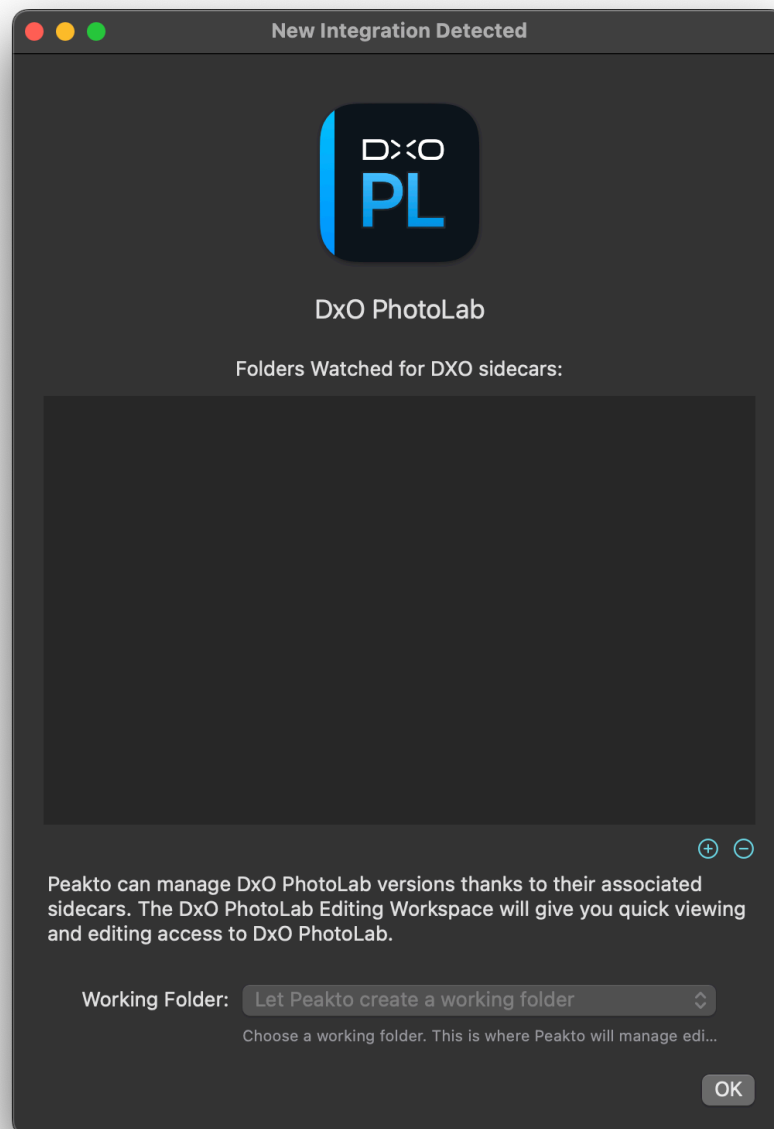
Peakto lets you also reference DXO versions that are stored outside watched folders. This is interesting if your images referenced in catalogs such as C1 or Lightroom. Editing in DXO will create a dop file inside the original file hierarchy which is not scanned by Peakto. As a result, those edits would be missed.

The DXO PhotoLab workspace comes with a option that allows you to add full folder hierarchies to be scanned only for the presence of dop files.

To add such a hierarchy of folders:

- choose Edit Software Integration from the source contextual menu

- Click the + button to add a folder to the list



3.3.The DXO PureRAW editing workspace

This workspace has the following properties :

- All exports created from DXO PureRaw can be referenced there,
- A working folder lets you put copies of raw images for which you want to run a DXO PureRaw process.